



# ANNUAL REPORT 2023

**Rasikashraya Sanskrutik Kala Va Bahuuddeshiya Sanstha**

---



# Trustee Note



The impact of Rasikashraya Sanstha has been significant this past year, reaching 380,553 beneficiaries and covering 278 villages. Our focus has been on strengthening the public health system, promoting inclusivity for persons with disabilities, and emphasizing livelihood and skill development.

Our journey, which began in Ghatanji, has expanded to include the blocks and villages of Wardha and Chandrapur along with Yavatmal district. This year, we supported 260 students in 40 schools by providing them with school bags and materials, a new initiative for us. Additionally, we emphasized employment generation by developing professional skills among women to make them self-reliant, training a total of 3,507 women. We also connected 104 women self-help groups and 63 individual beneficiaries with banks and other institutions.

In response to heavy rains in the north of the district, which led to 156 villages being flooded, we provided ration kits to 1,000 people from 25 villages, including vulnerable groups such as the elderly, widows, destitute persons, and disabled individuals. Health camps were also organized for immediate check-ups.

**Dattatray Ghode**  
Chairman



## Our team



**Nitin Pawar, Coordinator**



**Sachin Sakarkar,**  
Program Officer



**Manisha Turke,**  
Admin



**Sangita Upate,**  
Field Facilitator



**Viki Ghuse,**  
Block Coordinator



**Rahul Shende,**  
Block Coordinator



**Yogita Khedkar,**  
Counselor



**Nisha Rathod,**  
Counselor

## About Rasikashraya

Rasikashraya, founded in 1999 by a group of young activists, has a General Body and an Executive Committee comprising seven members each. Over the years, we have gained substantial experience working with leading organizations in rural development, notably Vidarbha Lok Vikas Manch, Nagpur, and Nehru Yuva Kendra, Yavatmal.

Our operational area spans 278 villages in Ghatanji, Kalamb, and Yavatmal blocks of Yavatmal district. We have established a strong rapport with the local communities and work in partnership with beneficiaries on various developmental programs in health, education, disability, elderly care, disaster management, agriculture, and livelihood and skill development. Our dedicated team of workers drives these initiatives.

## Our Vision

We are committed to disseminating information and promoting sustainable development initiatives, responding to the needs of underrepresented and marginalized sectors of society. Our goal is the integrated development of poor rural communities, focusing on women, children, youth, farmers, and persons with disabilities. Our programs cover social, cultural, educational, and human development aspects.

## Our Mission

Our mission is to expand our reach throughout Maharashtra, improve the quality of life for poor families, and substantially increase their income. Development through education and training is our primary route. This includes empowering women, upgrading the skills of the youth, rainwater harvesting, addressing issues of persons with disabilities, elderly care, disaster management, and other community-beneficial activities.



### Rasikashray Sanstha

Established: 1999

### Operational Area:

Ghatanji, Kalamb, Yavatmal, Wardha, and Chandrapur districts

### Focus Areas:

Health

Education,

Disability,

Elderly Care,

Women Empowerment

Disaster Management,

Agriculture, Livelihood, and Skill Development



# Our Value

## Inclusion

We Promote and practice Inclusion



## Innovation

Our work is relevant for changing environments



## Integrity

We use our resources well



## Collabration

We work with others to increase the impact of our work



## Compassion

We care about others





# This Year

We impacted lives in different and unique ways.  
Here are some of the key highlights.



## 380553

Persons received services  
through core activities



278 Villager  
Health Service &  
Awareness



3507 Women  
Livelihood



260 Students  
Educational Kits



682 Persons  
Elderly Care



6266 Persons  
Humanitarian Action



3 District  
278 Villages



438 Village Level  
Committees and Group



25664  
Direct Beneficiaries

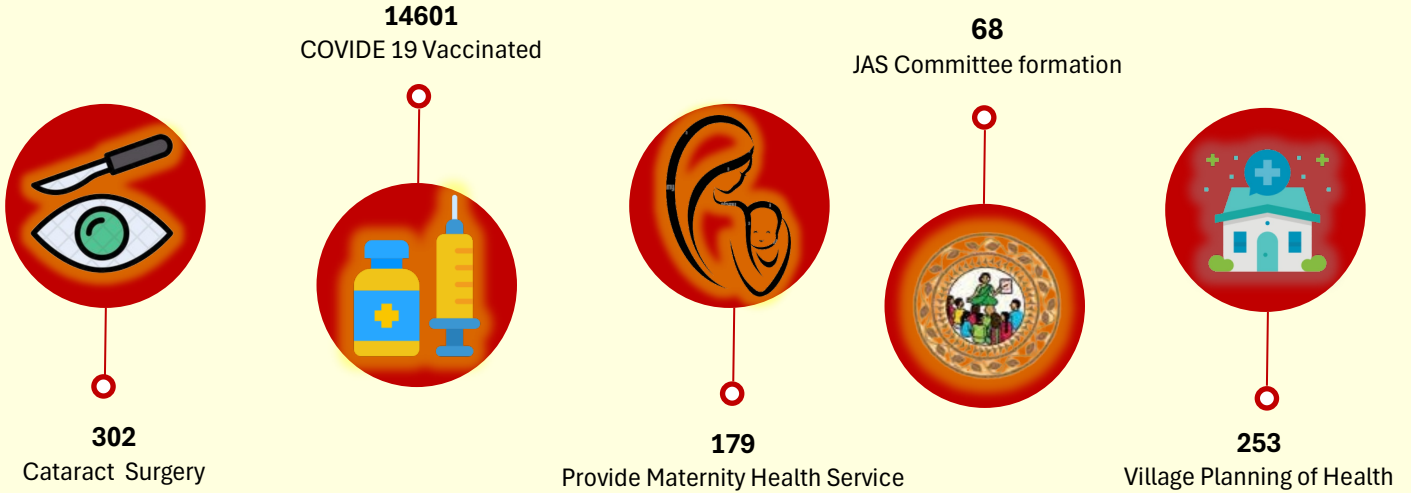


102656  
In-Direct Beneficiaries





# Inclusive Health Care



We aim to make healthcare accessible to everyone, acting as a district coordinating body to promote service access through community-based accountability processes. This year, through projects such as social action for health, strengthening maternal and child health services, and increasing COVID-19 vaccination and awareness, we empowered local people and committees to take action and ensure their health rights are protected. Our initiatives cover 253 villages in Yavatmal and Ghatanji talukas.

## Activity

- 1. Capacity Building:** We focused on capacity building for VHNSC, Jan Arogya Samiti (JAS), and Patient Welfare Samiti (RKS) at village, sub-center, and primary health center levels.
- 2. Strengthening Health Institutions:** We worked to regularize committee meetings and increase proactive planning and activities.
- 3. Village Action Plan:** We prepared participatory Village Action Plans.
- 4. COVID-19 Vaccination:** Extended the vaccination phase and awareness.

## Key Highlights

- A. Jan Arogya Samiti (JAS):** Established and operationalized in 68 sub-centers, with Gram Panchayats taking initiatives to strengthen health institutions.
- B. Capacity Building Impact:** 67% regularity of committee meetings and increased proactiveness in planning and activities.
- C. Women and Child Health Services:** Increased by 14%, with a 10% increase in inspections. Financial benefit schemes saw significant improvements: Pradhan Mantri Matru Vandana Yojana (40%), Janani Suraksha Yojana (57%), and Budit Majuri Yojana (63%).
- D. Participatory Health Action Plans:** Prepared for 253 villages.





# Women Empowerment



## Women's Group Livelihood Projects

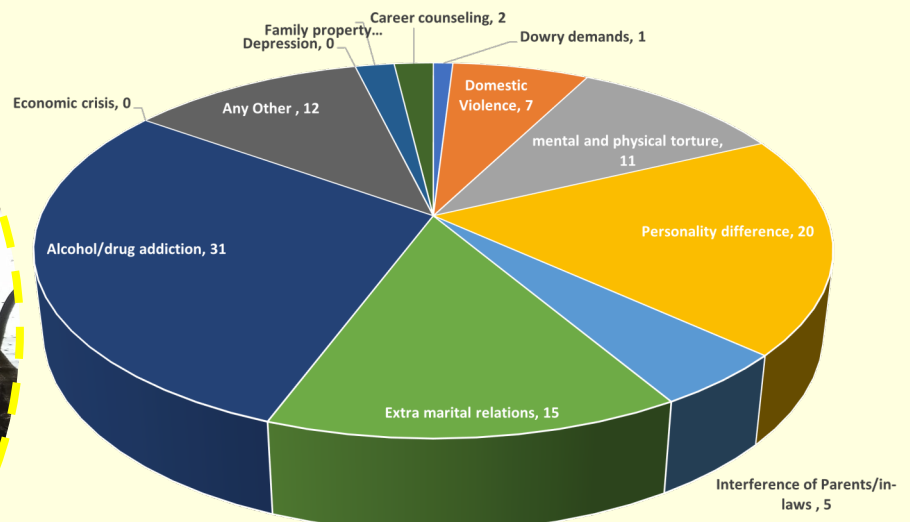
**Livelihood Projects:** Focused on employment generation and professional skill development for women. Trained 3,507 women, connected 104 women self-help groups, and 63 individual beneficiaries with banks and institutions. This increased family incomes by 20% to 30%.

## Support to Suicide Farmer Family

Provided financial assistance of 56.15 lakh to 247 widows of farmer suicide victims. Supported livelihood creation through goat rearing, sewing, hemp industry, grocery stores, irrigation, and electricity systems for agriculture.

## Family Counselling Centre

Since 2003, we have dealt with 2,457 cases of domestic violence. This year, 106 cases were registered, 52 families avoided dissolution, 24 families were referred for technical assistance, and 30 cases are ongoing.





## Disability

For the past 12 years, we have worked on health, education, socialization, employment, and empowerment of persons with disabilities. This year, in collaboration with Give.do, we developed skills and created employment opportunities for 35 youths, contributing financially to their families. Persons with disabilities are included in social and cultural programs.





# Education

Since 2000, Rasikashray has provided pre-primary education facilities to children from slum areas, striving to offer quality and happy education to underprivileged children from poor families. This year, we distributed school kits to 78 children from 15 flood-affected villages and 182 children from 20 schools in tribal Kolam pada, prioritizing those without parents.



School, which was stopped for the past two years due to the outbreak of Kovid 19, had started, already tired of staying at home and learning online.... Due to the heavy rains, flood water entered the village, books and notebooks were damaged. Due to this flood, there was huge damage to agriculture and houses. When the parents were already suffering, the thought of what we should ask for school supplies back always came to our mind, but the school kit received through service collaboration and Rasikashray became very valuable...

Krutika and Achal, Ghoti



# Elderly Care

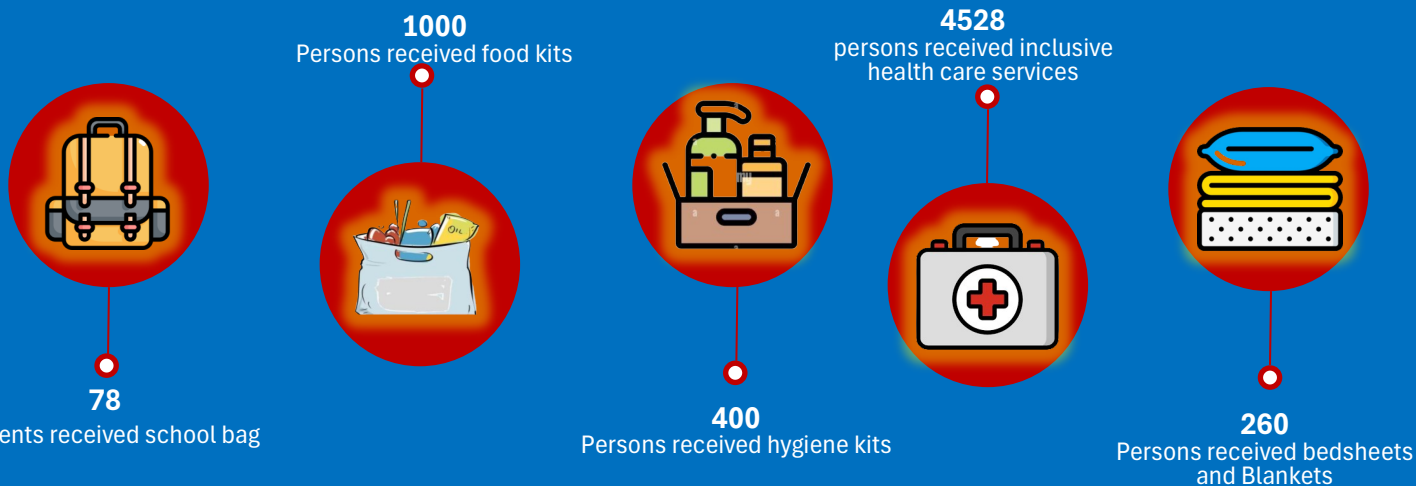


We provided services such as eye surgery, ration kits, medicines, daily materials, and social security scheme benefits to 682 elderly people in need. A trip to Mumbai, "Jeevachi Mumbai," was organized for 25 elderly persons, leading to increased financial support for elderly care in Maharashtra.

During a visit, Deputy Chief Minister Devendra Fadnavis met with them to discuss the inadequacy of the Sanjay Gandhi Niradhar Yojana funds. Recognizing the financial hardships caused by inflation, he increased the monthly allowance from ₹1000 to ₹1500 in the March 2023 budget, benefiting 50 lakh elderly people in Maharashtra.



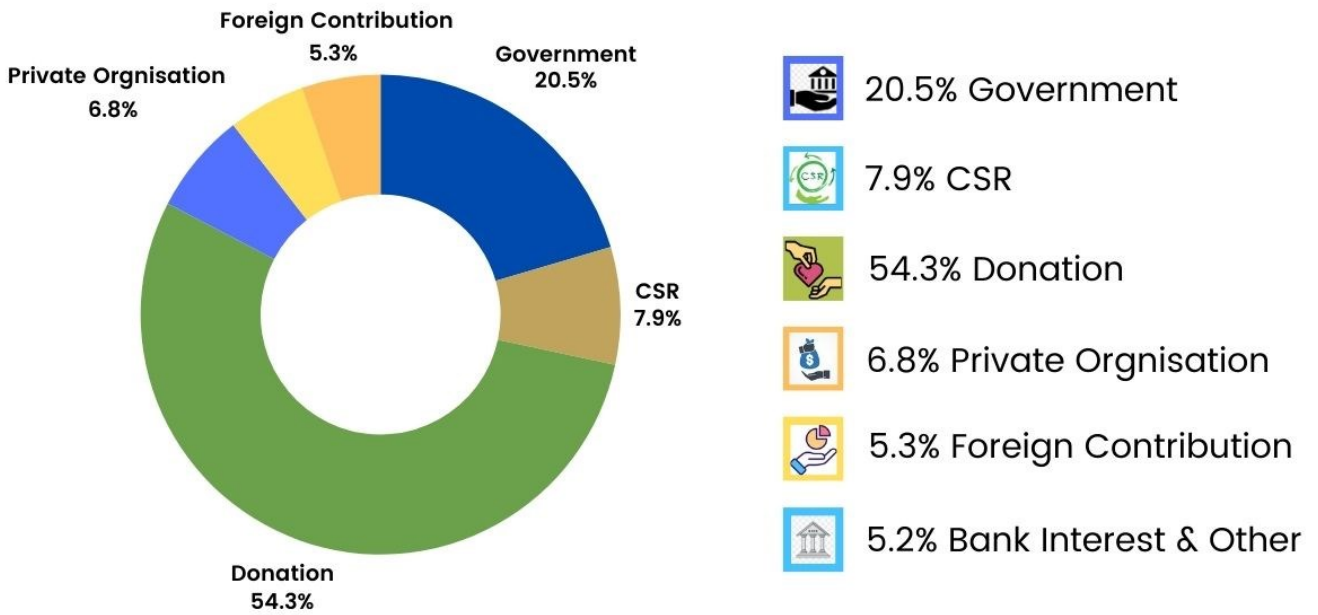
## Humanitarian Action



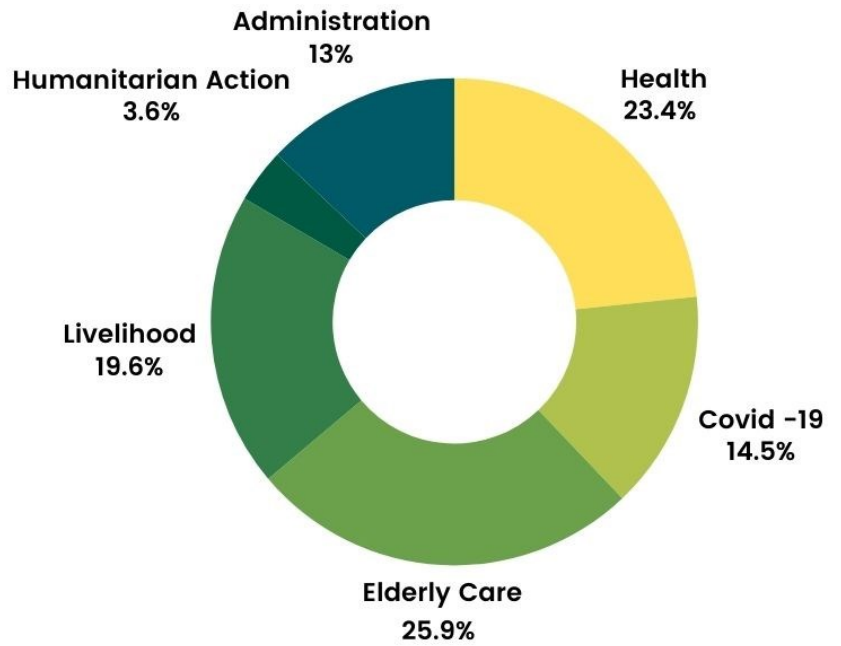
Faced with natural calamities, including floods, we provided basic health care, ration kits, sanitation kits, clothes, and warm clothes to 1000 needy people in Yavatmal, Wardha, and Chandrapur districts. Educational materials kits were distributed to 78 children affected by floods.



# Mobilization of Funds

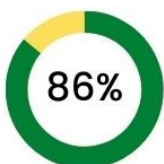


# Utilization of Funds



**Mobilization of Funds**

**63.31 Lac**



**Utilization of Funds**

**54.63 Lac**

## Our Partner...

- Azim Premji Philanthropic Initiative Private Ltd.
- Give Foundation India
- Give Foundation INC
- SaathiRe Social Impact Solutions Pvt Ltd
- E.S. Venkataraman Trust Pune
- R.G. Manudhane Foundation for Excellence
- Nation Health Mission of Maharashtra
- MS Social Welfare Board, Mumbai
- Anusandhan Trust, SATHI, Pune



# Rasikashraya Sanstha, Ghatanji

Parwa Road Ghatanji Dist. Yavatmal -445301

## Consolidated Income & Expenditure 31st March 2023

MANISH M. KEDIA  
CHARTERED ACCOUNTANT

F/11-12, Indraprastha Plaza,  
Yerawar Chowk, Yavatmal - 445 001.

MANISH KEDIA  
B.Com., F.C.A.

### RASIKASHRAYA SANSKRUTIK KALA VA BAHUDESHEIYA SANSTHA GHATANJI Consolidated Income & Expenditure Account for the year ended 31/03/2023

Expenditure	₹	Income	₹
<u>Contingencies</u>	686472.92	<u>Grant in Aid</u>	
		Family Counselling Centre	288000.00
<u>Expenditure on object of the Trust</u>	4001753.00	Rasikashraya Main	1044092.00
		FCRA	336842.00
		CAH Project	895441.05
Family Counselling Centre	265800.00		
English Medium School	170500.00	<u>Donation</u>	3436352.00
Community Action for Health	374672.00		
Covid Vaccination Project	585000.00	1395972.00 <u>School Fees</u>	223250.00
		<u>Rasikashraya Training Center</u>	35279.00
Grant Refund	65369.00	<u>Rent</u>	36000.00
		<u>Bank Interest</u>	15034.00
<u>Remittance to Salary</u>			
Profession Tax Paid	13100.00	<u>FD Interest</u>	10344.00
Surplus for the Period	168667.13	<u>Deduction from Salary</u>	
		Professional Tax Deducted	10700.00
Total	6331334.05	Total	6331334.05



AS PER OUR REPORT OF EVEN DATE

*Manish M. Kedia*

YAVATMAL  
Date:- 24/06/2023

CHARTERED ACCOUNTANT

*Manish M. Kedia*  
TRUSTEE  
Chairman  
Rasikashraya Sanstha

# Consolidated Balance Sheets 31st March 2023

MANISH M.KEDIA

CHARTERED ACCOUNTANT

F/11-12, Indraprastha Plaza,

Yerawar Chowk, Yavatmal - 445 001.

MANISH KEDIA

B.Com., F.C.A.

## CONSOLIDATED BALANCE SHEET AS AT 31st March 2023

Liabilities	₹	Assets	₹
<u>Membership Fund</u>	3507.00	<u>Fixed Assets</u>	1340202.00
		As per Schedule 'A'	
<u>Income &amp; Expenditure Account</u>		PF Contribution	3500.00
As per last B/sheet	3784336.63		
Add: Surplus during the year	<u>168667.13</u>	T.D.S.	137038.06
		FDR	100000.00
<u>Notes on Accounts</u>		<u>Cash &amp; Bank Balance</u>	2375770.70
1) Method of accounting is Cash.		As per Schedule 'B'	
2) No Depreciation is provided on Fixed Assets.			
<b>Total</b>	<b>3956510.76</b>	<b>Total</b>	<b>3956510.76</b>

AS PER OUR REPORT OF EVEN DATE

YAVATMAL  
Date:- 24/06/2023



*Manish*  
CHARTERED ACCOUNTANT  
UDIN: 23121509BGWCGL8001

*[Signature]*  
TRUSTEE  
Chairman  
Rasikashraya Sanstha



## Conclusion

Reflecting on our achievements in 2023, Rasikashray Sanstha remains committed to expanding its reach and impact. We aim to build a more inclusive society by continuing our efforts in health, education, livelihood, disability, elderly care, and disaster management. The community's support and donor organizations' financial backing have been crucial in realizing our goals, and we look forward to another year of dedicated service.

# Gratitude

Rasikashraya extends its sincere gratitude to all the Supporters, Donors, Members, Workers of the organization and Villagers for extending their heartiest support for serving the society. We also extend our sincere thanks to those all who have directly or indirectly helped us in our endeavor.



### Address

Rasikashraya Sanstha  
Parwa Road, Ghatanji Dist Yavatmal - 445301  
Maharashtra (INDIA)



### Telephone

9423434927, 7057570619



### Website

[www.rasikashraya.org](http://www.rasikashraya.org)